



BHN China Presentation

Contents:

- 1. Development of China Market**
- 2. Field Reports**
- 3. KenTao Lab**

Our mid-term goals:

1. On eligible crops, completely replace regular fertilizers in fertigation market.
2. Pursue a specific market share based on region, crop and product, achieving a relative (not absolute) sale target.
3. The ultimate objective of marketing is spreading application method of products and long-term potential benefits. March forward on a predetermined path, avoiding sales-orientation.

A Farmers Meeting



Field Visit



我用优马全程

我为优马代言

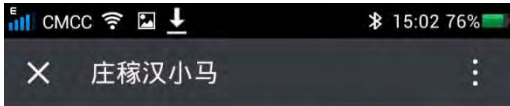


美国优马全程

水肥一体化

助力高品质葡萄





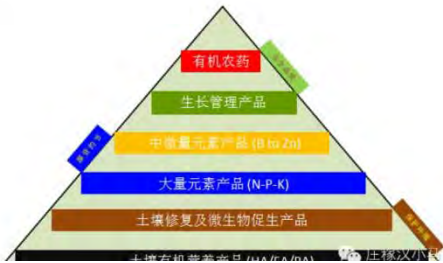
优马——踏遍神州寸土金，驰骋万里优马心

2016-04-03 庄稼汉小马

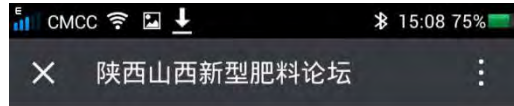
资料二、产品介绍



优马农业产品具体可分为六类：



Wechat Subscription Accounts



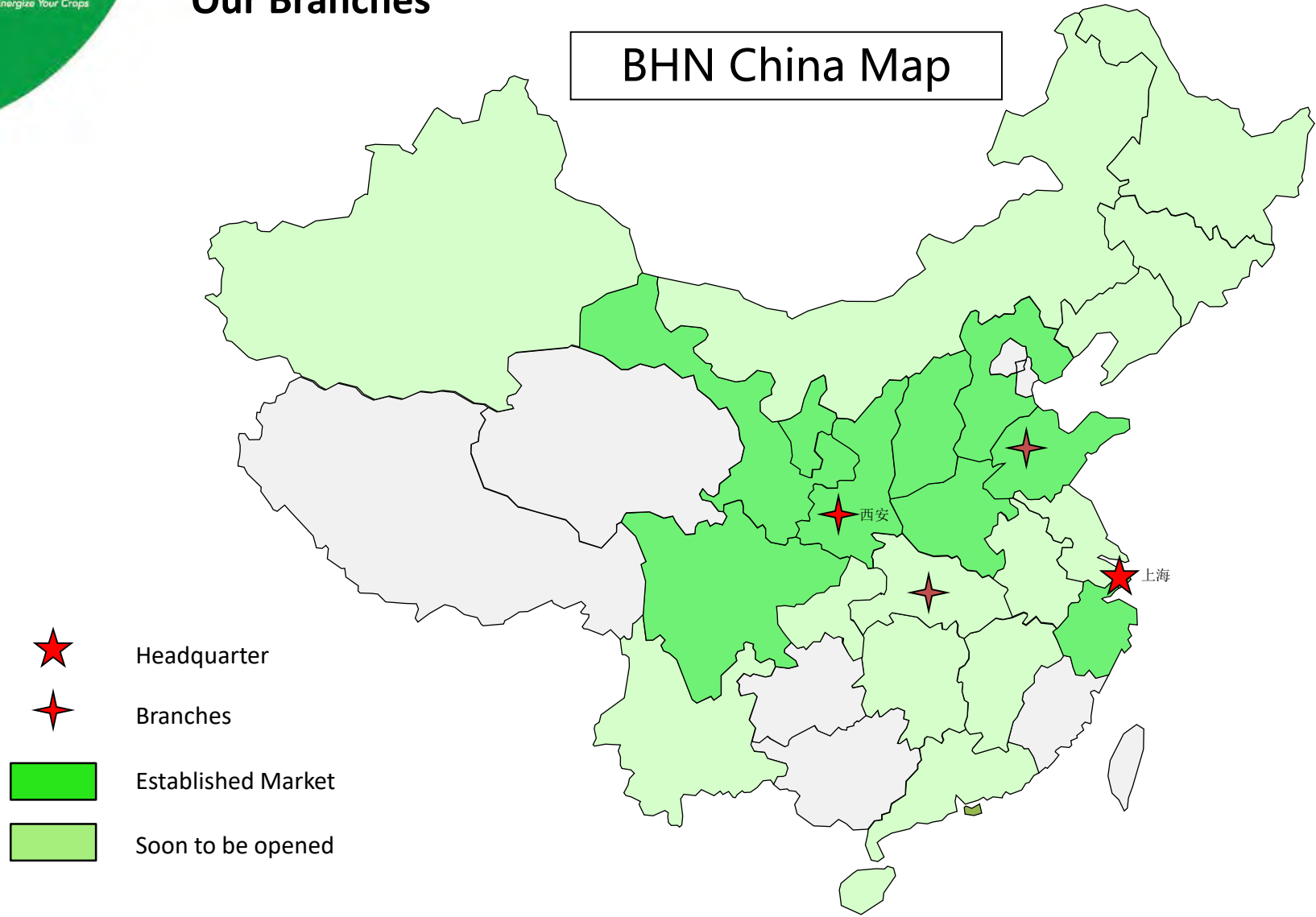
为广大种植户服务，生产安全优质的果蔬，优马人是认真的！每天改变一点点，一年下来就可以改变很多，坚持只是为了能够为农业带来不一样的改变！



Crop Management Guides

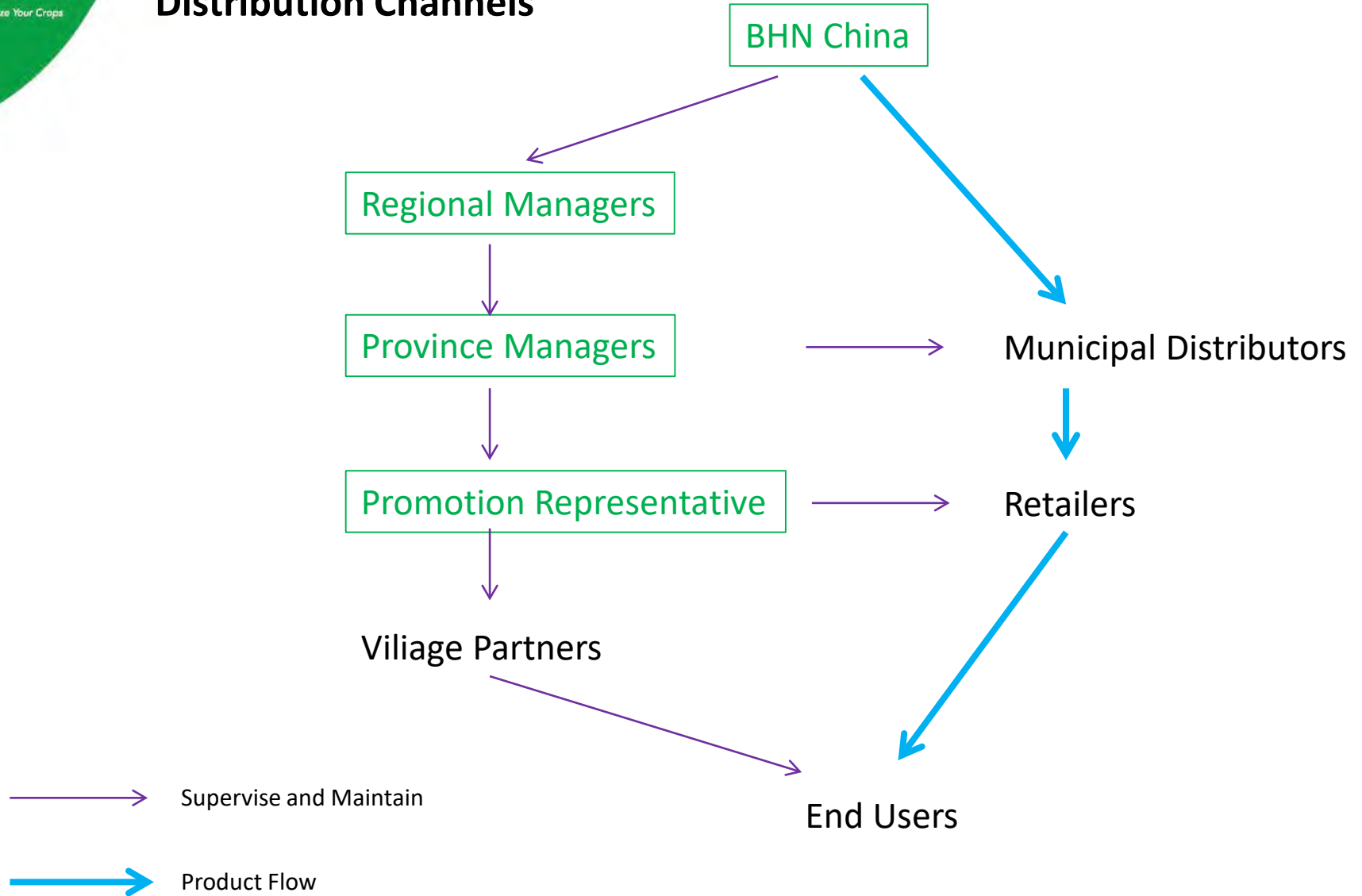
Our Branches

BHN China Map



- ★ Headquarter
- ★ Branches
- Established Market
- Soon to be opened

Distribution Channels



Huma Gro Fertilizer Programs



Huma Gro Grape Program

Timing	Products		Notes
	Foliar	Soil (per ha)	
Sprout	VITOL II 300-500 times dilution, spray on branches and trunk, once every week, 2-3 times.	SUPER PHOS 15L + Gaishi (calcium and magnesium nitrate)75kg + UAN 75kg	<ol style="list-style-type: none"> 1. Improve quality of buds, promote sprout; 2. Promote root growth; 3. Activate soil.
Flowering	VITOL II 100 times dilution, spray on bunches, 1-2 times.	SUPER PHOS 15L + Gaishi 5kg, apply twice with an interval of 15 days	<ol style="list-style-type: none"> 1. Guarantee a perfect bunch shape; 2. Promote flowering; 3. Improve fruit setting.
Fruit sizing	CALCIUM 500 time dilution, spray on leaves, once every half month, for twice.	SUPER K 30L + UAN 150kg , after 15 days, SUPER K 15L + Gaishi 75kg	<ol style="list-style-type: none"> 1. promote fruit sizing; 2. Accelerate coloring; 3. Smooth fruit surface .
Pre-mature	JACKPOT 1000 times dilution + CALCIUM 500 time dilution, spray on leaves 7-21 days before harvest, 2-3 times with an interval of 7 days.	SUPER K 30L + Gaishi 75kg, apply twice with an interval of 20 days	<ol style="list-style-type: none"> 1. Increase fruit weight and quality; 2. Harvest 3-7 days earlier; 3. Improve shelf life.

Huma Gro



Regular Fertilizers





Huma Gro Apple Program

Timing	Products		Notes
	Foliar (per ha)	Soil (per ha)	
Base fertilizer		manure fertilizer 45-60 tons + Urea 150kg + DAP 225kg	if the target yield is higher than 52 tons, add 2 tons manure for every extra 1 ton yield.
sprout	VITOL II 1.5L	SUPER PHOS 15L + UAN 45kg + 7.5L SUPER K	Better sprout vigor and cold resistance
Right before flowering	SUPER PHOS 15L + Gaishi 75kg + SUPER K 7.5L	BREAKOUT 1.5L + BORON 0.5L, spray twice	Promote flowering
Fruit sizing	CALCIUM 1.5L	SUPER K 15L + SUPER PHOS 500ml + Gaishi 45kg	Promote fruit sizing Ensure a better apple shape
Pre-mature	JACKPOT 3L + CALCIUM 1.5L	SUPER K 45L + Gaishi 75kg	Accelerate coloring
After harvesting		FULVI PRO 45kg + Gaishi 45kg + SUPER PHOS 15L	Restore tree vigor

Huma Gro

Regular



Huma Gro

Regular

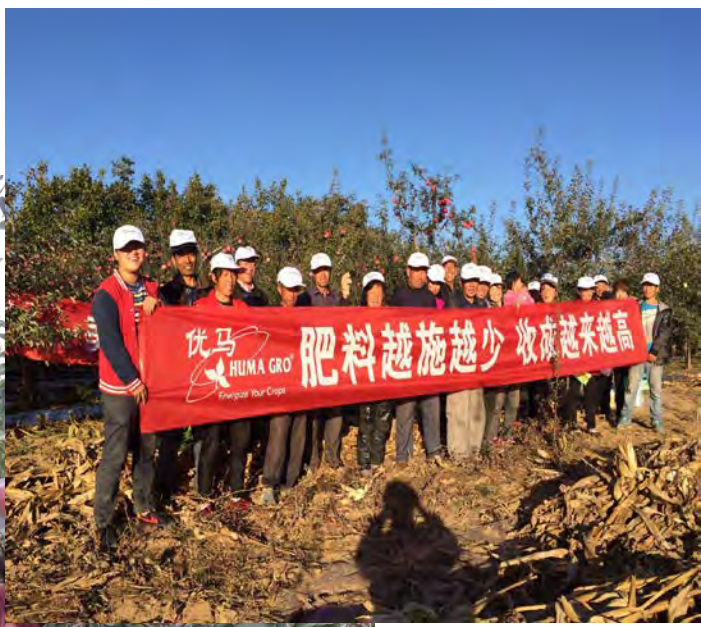


BREAKOUT

Apple flowering assistant

Breakout 500 times dilution spray twice:
The first time: when red color appears on flower bud
The second time: when king flower opens

延安市延长县安沟镇庙梁村



KenTao Lab



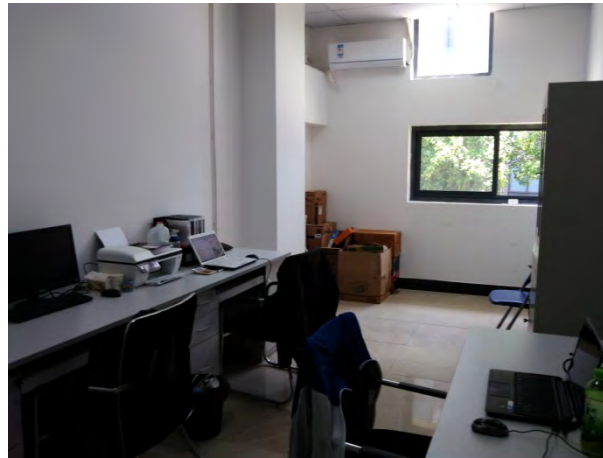
Outside View



Inside the lab



Chemical room



Office



Air cleaning unit

Leaf Analysis

- 1) Leaf Nitrogen
- 2) Leaf Phosphorus
- 3) Leaf Potassium
- 4) Leaf Calcium
- 5) Leaf Magnesium

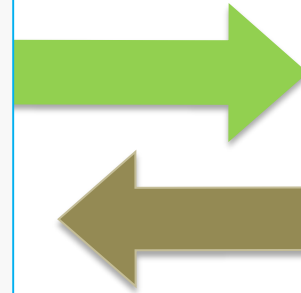
.....



Soil Analysis

- 1) Soil PH
- 2) EC
- 3) Soil Phosphorus
- 4) Soil Nitrogen
- 5) Soil Potassium

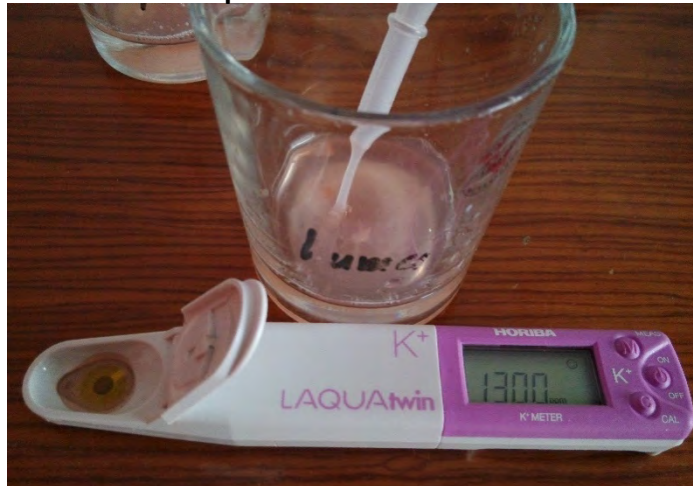
.....



Soil EC



Sap K content



Soil pH



Sugar content



Soil density



Water EC



Thanks
For
Listening!

